

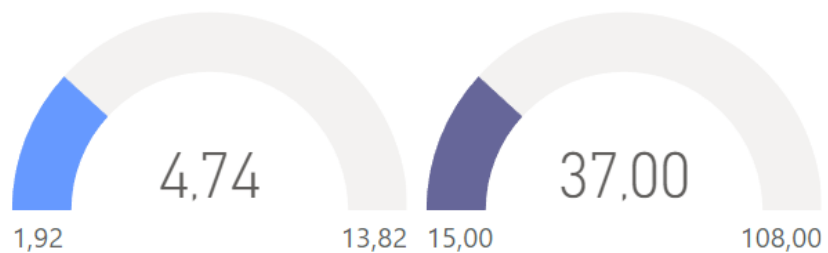
Temporada

2023-2024

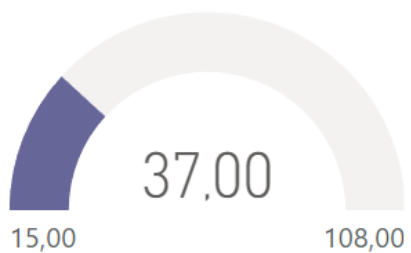
Semana

40-41

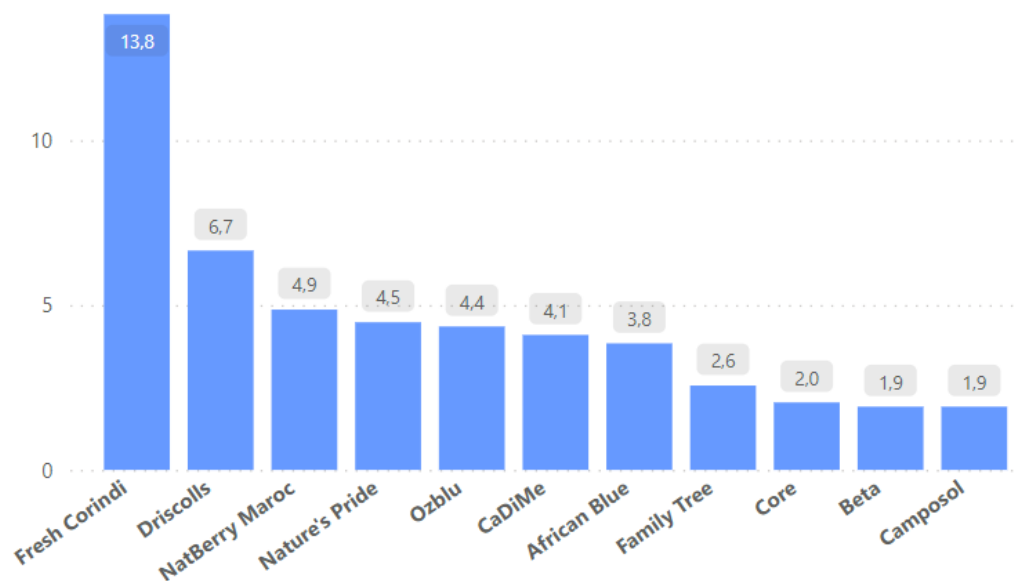
Precio US Dollar



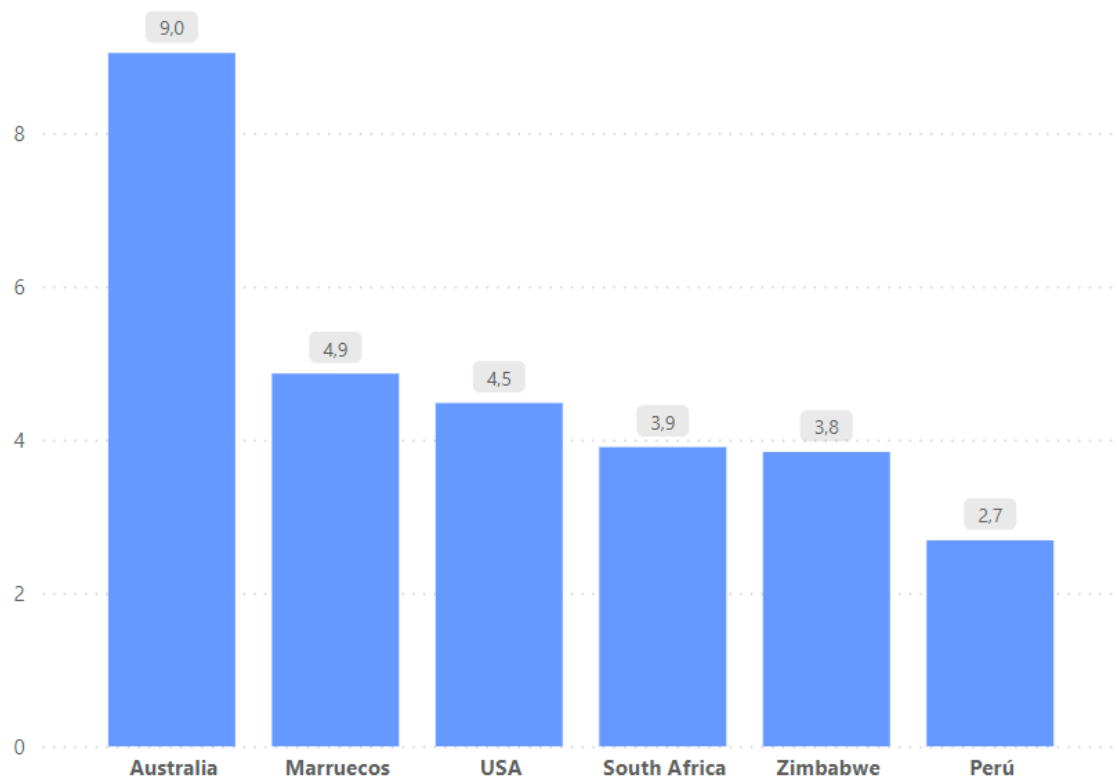
Precio Hong Kong Dollar



US Dollar por Etiqueta



US Dollar por Origen



| Origen | Etiqueta | Formato | Precio (Hong Kong Dollar) | Precio (US Dollar) |
|--------------|----------------|---------|---------------------------|--------------------|
| Australia | Driscolls | 125g | 45 | 5,76 |
| Australia | Driscolls | 200g | 59 | 7,55 |
| Australia | Fresh Corindi | 200g | 108 | 13,82 |
| Marruecos | NatBerry Maroc | 200g | 38 | 4,86 |
| Perú | Beta | 125g | 15 | 1,92 |
| Perú | Camposol | 125g | 15 | 1,92 |
| Perú | Family Tree | 125g | 20 | 2,56 |
| Perú | Ozblu | 125g | 23 | 2,94 |
| Perú | CaDiMe | 170g | 32 | 4,10 |
| South Africa | Core | 125g | 16 | 2,05 |
| South Africa | Ozblu | 200g | 45 | 5,76 |
| USA | Nature's Pride | 125g | 35 | 4,48 |
| Zimbabwe | African Blue | 125g | 30 | 3,84 |

Hong Kong; Blueberries

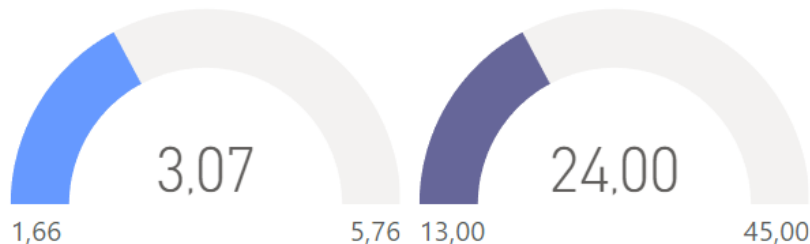
Temporada

2023-2024

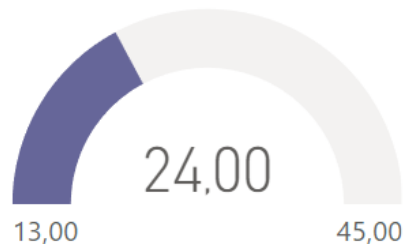
Semana

42

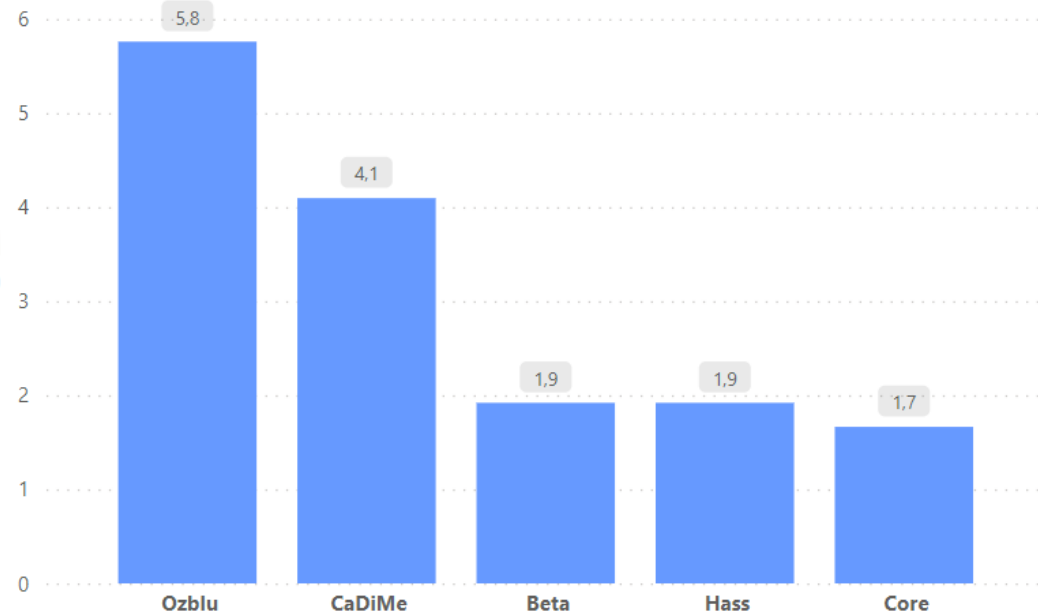
Precio US Dollar



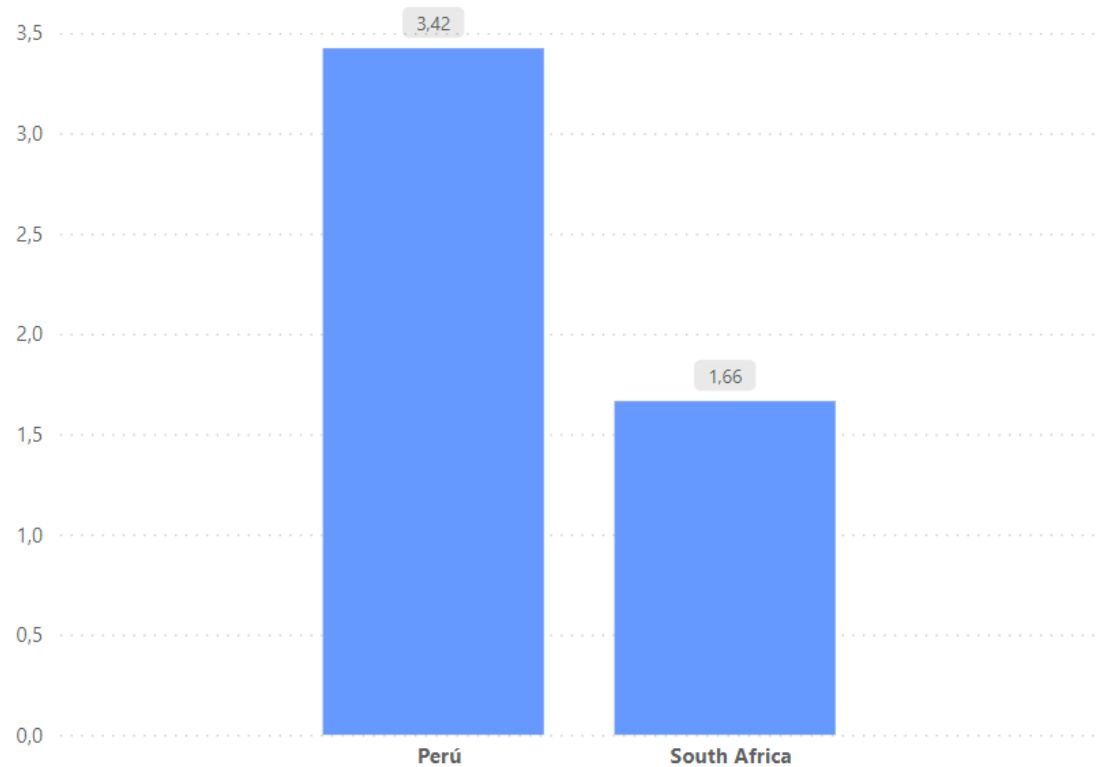
Precio Hong Kong Dollar



US Dollar por Etiqueta



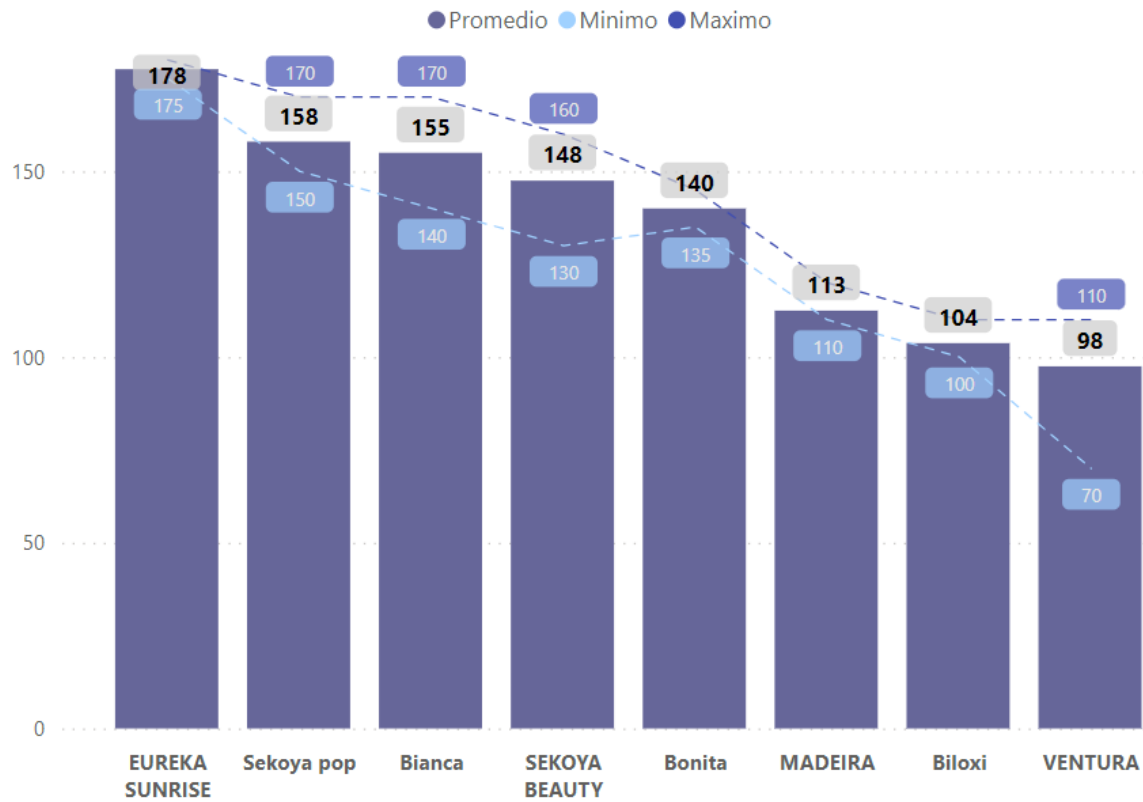
US Dollar por Origen



| Origen | Etiqueta | Formato | Precio (Hong Kong Dollar) | Precio (US Dollar) |
|--------------|----------|---------|---------------------------|--------------------|
| Perú | Beta | 125g | 15 | 1,92 |
| Perú | Hass | 125g | 15 | 1,92 |
| Perú | CaDiMe | 170g | 32 | 4,10 |
| Perú | Ozblu | 200g | 45 | 5,76 |
| South Africa | Core | 125g | 13 | 1,66 |

Hong Kong; Blueberries

Rangos Precio (RMB) por Variedad



Precio (RMB) Desde

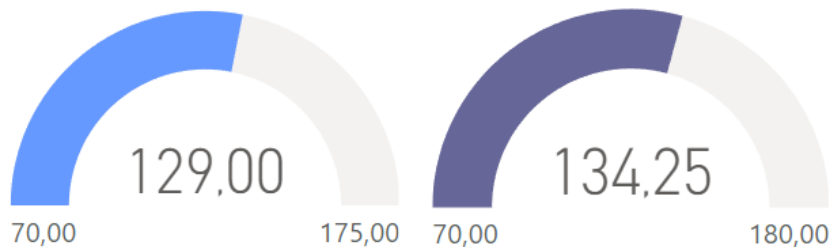
Precio (TMB) Hasta

Temporada

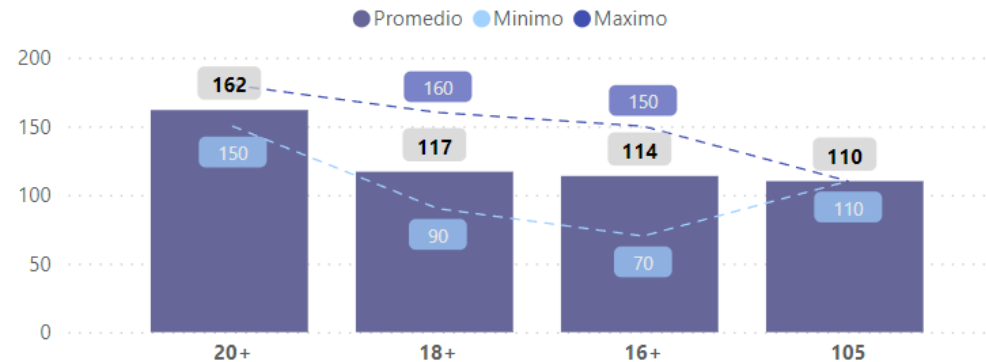
2023-2024

Semana

42



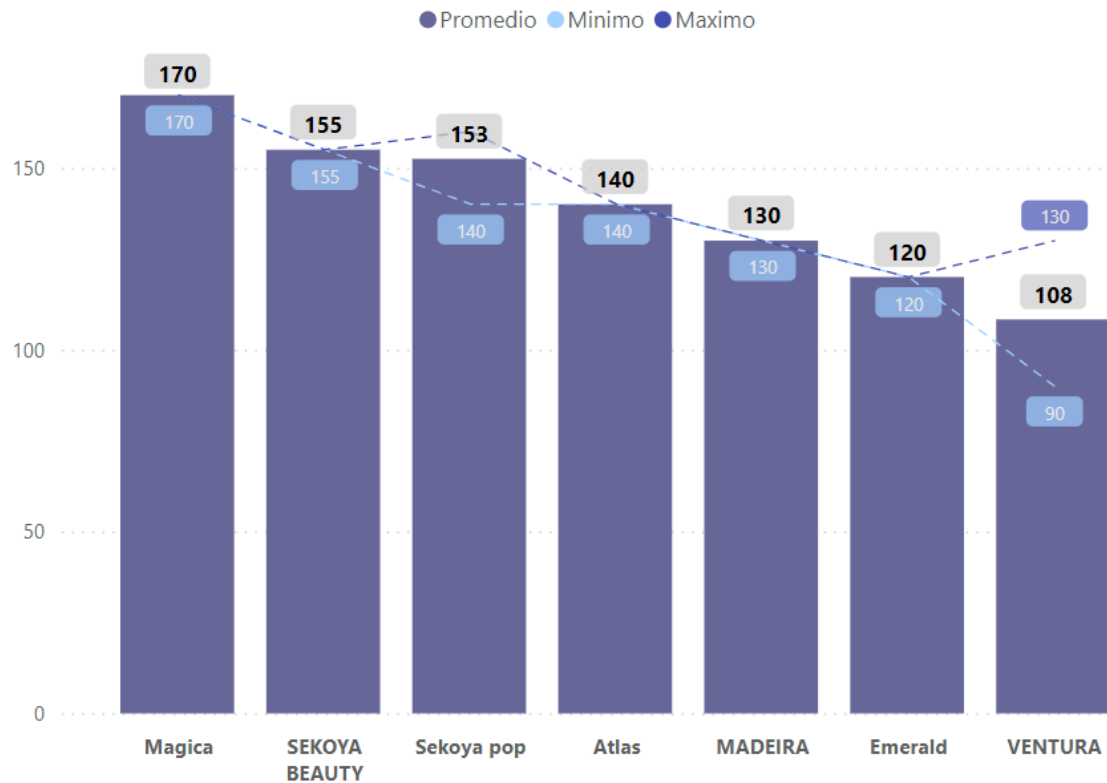
Rangos Precio (RMB) por Diametro



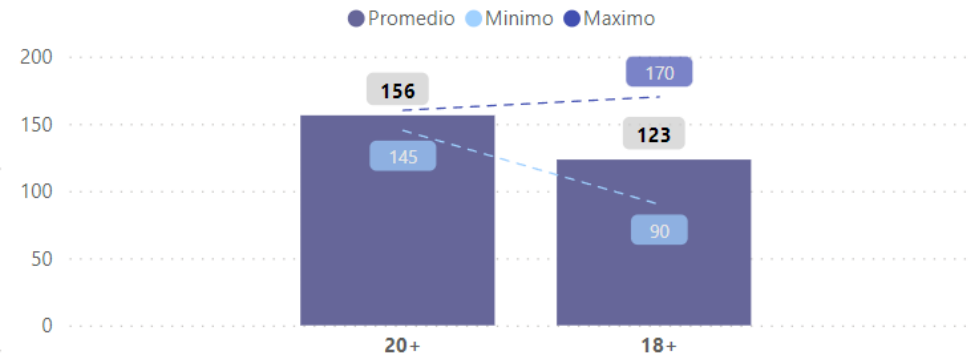
| Variedad | Diametro Fruto (mm) | Precio (RMB) |
|----------------|---------------------|--------------|
| Bianca | 16+ | 145 |
| Bianca | 20+ | 165 |
| Biloxi | 16+ | 100 |
| Biloxi | 18+ | 108 |
| Bonita | 16+ | 140 |
| EUREKA SUNRISE | 20+ | 178 |
| MADEIRA | 18+ | 110 |
| MADEIRA | 18+ | 115 |
| SEKOYA BEAUTY | 18+ | 140 |
| SEKOYA BEAUTY | 20+ | 155 |
| Sekoya pop | 18+ | 155 |
| Sekoya pop | 20+ | 150 |
| Sekoya pop | 20+ | 155 |
| Sekoya pop | 20+ | 160 |
| Sekoya pop | 20+ | 170 |
| VENTURA | 105 | 110 |
| VENTURA | 16+ | 70 |
| VENTURA | 18+ | 90 |
| VENTURA | 18+ | 108 |
| VENTURA | 18+ | 110 |

China; Blueberries

Rangos Precio (RMB) por Variedad



Rangos Precio (RMB) por Diametro



| Variedad | Diametro Fruto (mm) | Precio (RMB) |
|---------------|---------------------|--------------|
| Atlas | 18+ | 140 |
| Emerald | 18+ | 120 |
| MADEIRA | 18+ | 130 |
| Magica | 18+ | 170 |
| SEKOYA BEAUTY | 20+ | 155 |
| Sekoya pop | 18+ | 140 |
| Sekoya pop | 20+ | 150 |
| Sekoya pop | 20+ | 160 |
| VENTURA | 18+ | 95 |
| VENTURA | 18+ | 110 |
| VENTURA | 18+ | 130 |

Precio (RMB) Desde

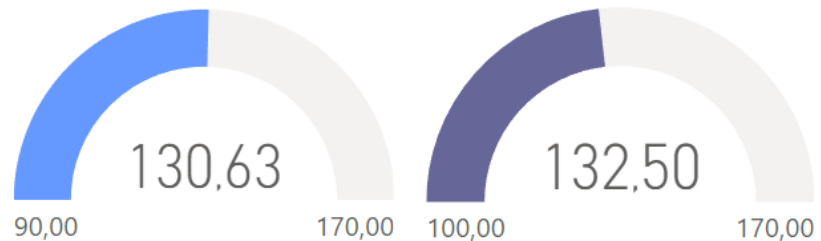
Precio (TMB) Hasta

Temporada

2023-2024

Semana

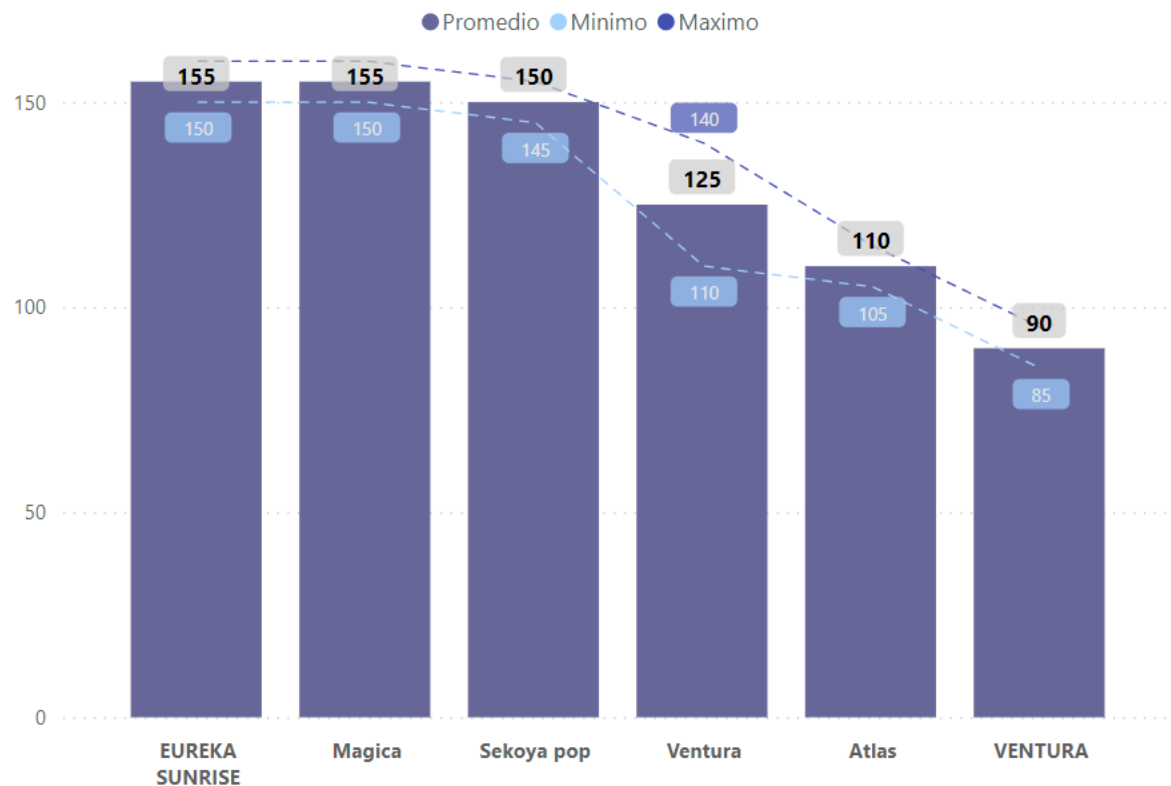
43



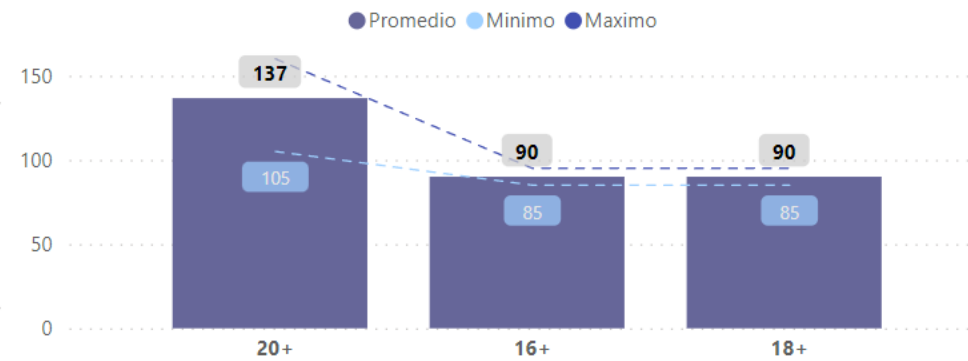
China; Blueberries



Rangos Precio (RMB) por Variedad



Rangos Precio (RMB) por Diametro



| Variedad | Diametro Fruto (mm) | Precio (RMB) |
|----------------|---------------------|--------------|
| Atlas | 20+ | 110 |
| EUREKA SUNRISE | 20+ | 155 |
| Magica | 20+ | 155 |
| Sekoya pop | 20+ | 150 |
| Ventura | 20+ | 115 |
| Ventura | 20+ | 135 |
| VENTURA | 16+ | 90 |
| VENTURA | 18+ | 90 |

Precio (RMB) Desde

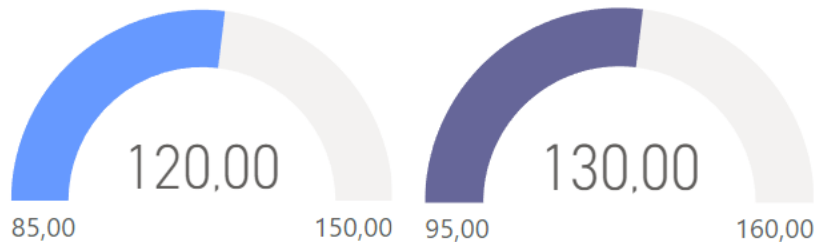
Precio (TMB) Hasta

Temporada

2023-2024

Semana

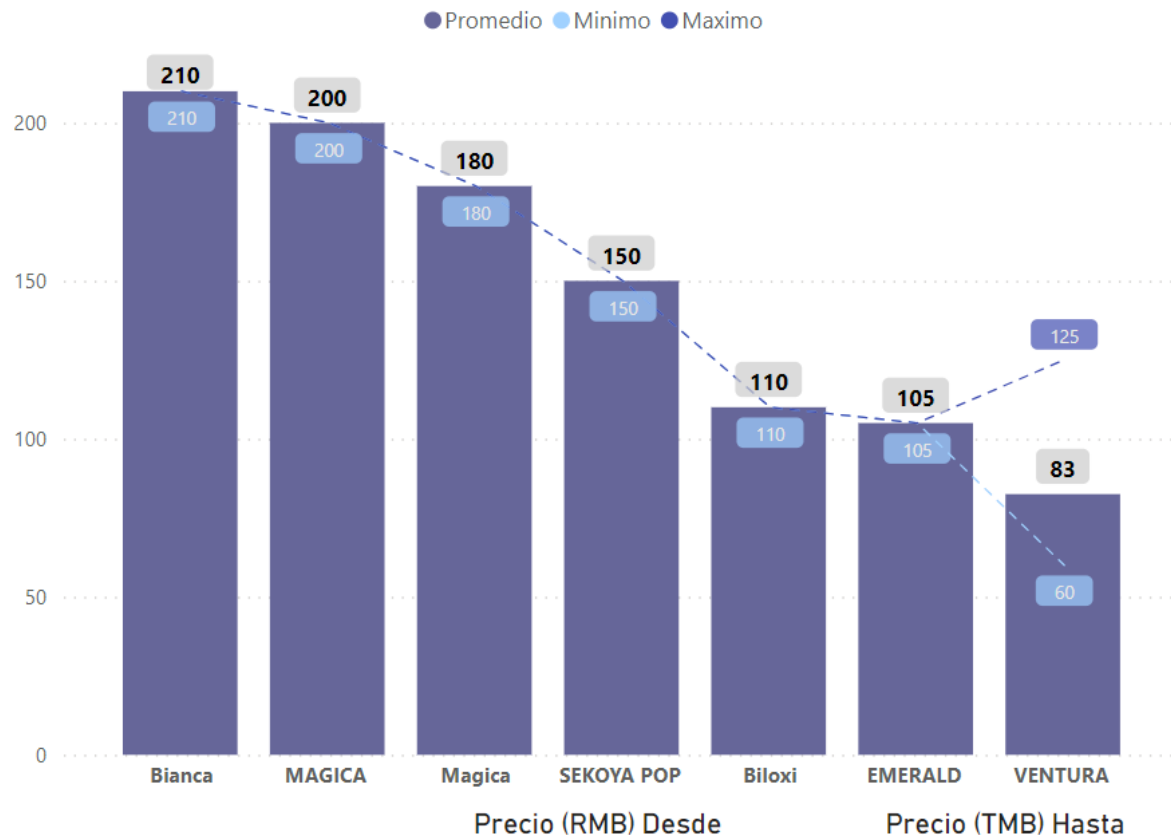
44



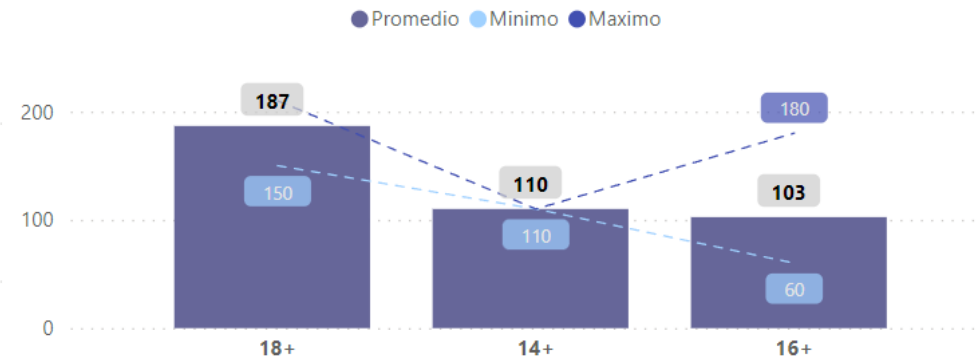
China; Blueberries



Rangos Precio (RMB) por Variedad



Rangos Precio (RMB) por Diametro



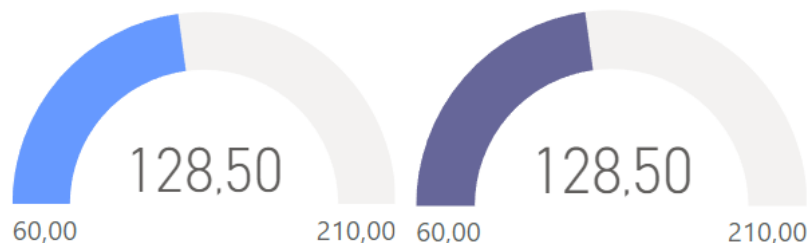
| Variedad | Diametro Fruto (mm) | Precio (RMB) |
|------------|---------------------|--------------|
| Bianca | 18+ | 210 |
| Biloxi | 14+ | 110 |
| EMERALD | 16+ | 105 |
| Magica | 16+ | 180 |
| MAGICA | 18+ | 200 |
| SEKOYA POP | 18+ | 150 |
| VENTURA | 16+ | 60 |
| VENTURA | 16+ | 65 |
| VENTURA | 16+ | 80 |
| VENTURA | 16+ | 125 |

Temporada

2023-2024

Semana

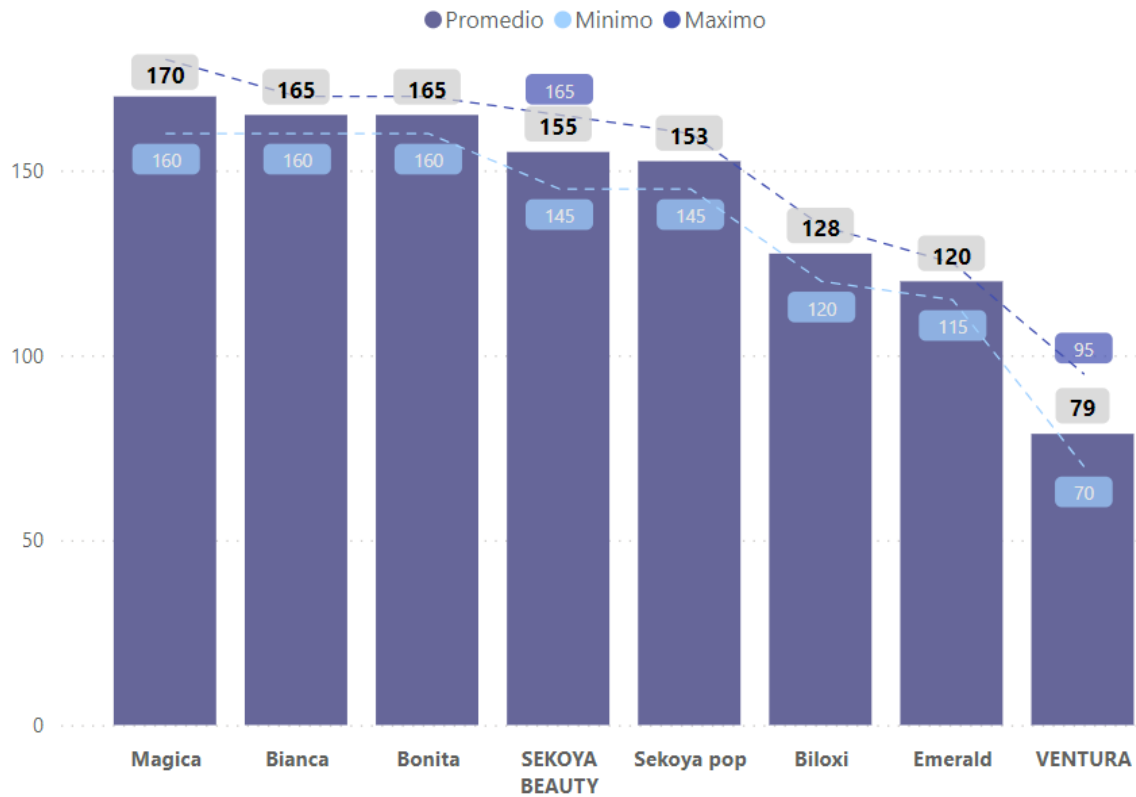
41



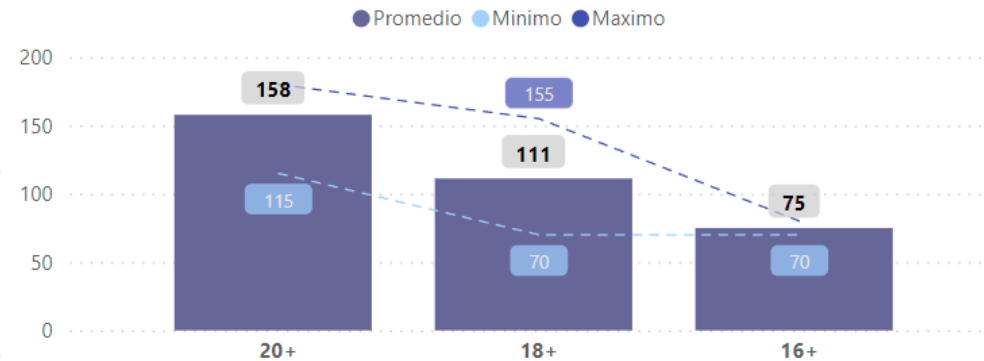
China; Blueberries



Rangos Precio (RMB) por Variedad



Rangos Precio (RMB) por Diametro



| Variedad | Diametro Fruto (mm) | Precio (RMB) |
|---------------|---------------------|--------------|
| Bianca | 20+ | 165 |
| Biloxi | 18+ | 128 |
| Bonita | 20+ | 165 |
| Emerald | 20+ | 120 |
| Magica | 20+ | 165 |
| Magica | 20+ | 175 |
| SEKOYA BEAUTY | 18+ | 150 |
| SEKOYA BEAUTY | 20+ | 160 |
| Sekoya pop | 18+ | 150 |
| Sekoya pop | 20+ | 155 |
| VENTURA | 16+ | 75 |
| VENTURA | 18+ | 75 |
| VENTURA | 18+ | 90 |

Precio (RMB) Desde

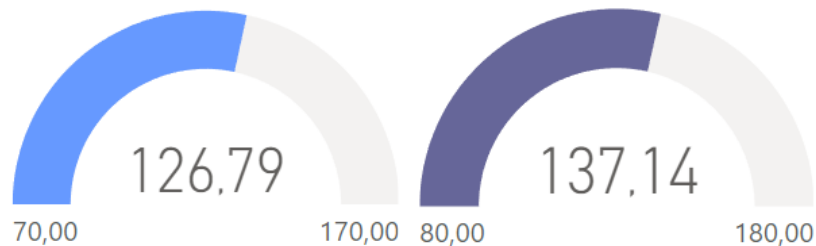
Precio (TMB) Hasta

Temporada

2023-2024

Semana

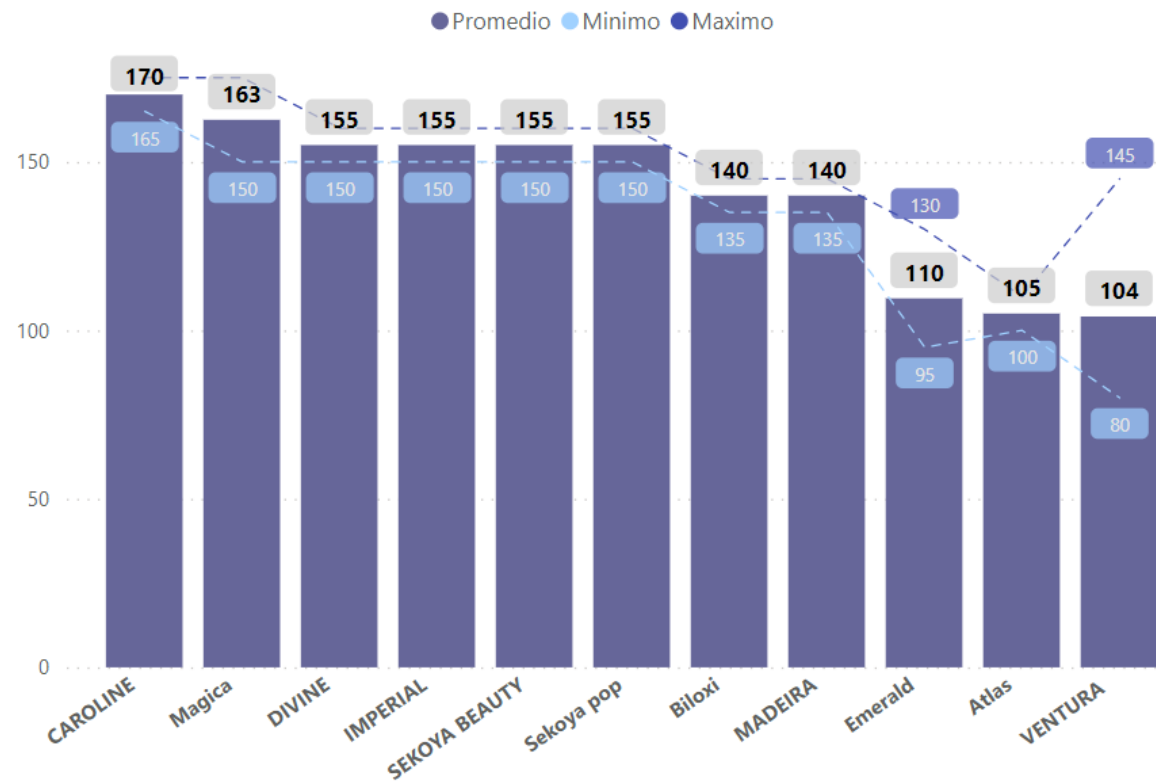
42



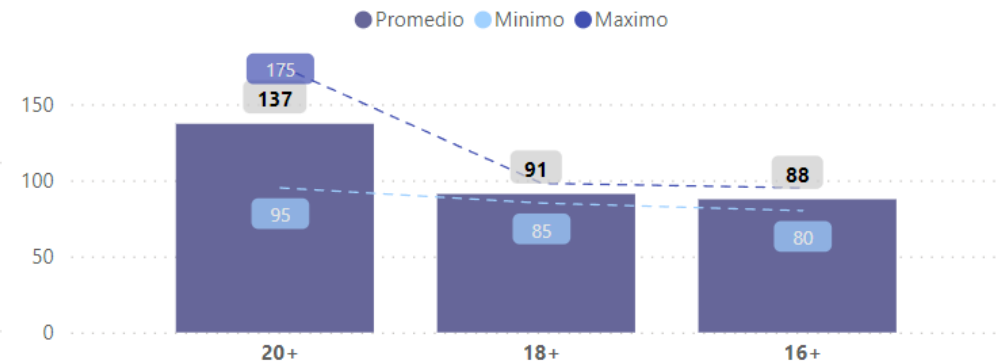
China; Blueberries



Rangos Precio (RMB) por Variedad



Rangos Precio (RMB) por Diametro



| Variedad | Diametro Fruto (mm) | Precio (RMB) |
|---------------|---------------------|--------------|
| Atlas | 20+ | 105 |
| Biloxi | 20+ | 140 |
| CAROLINE | 20+ | 170 |
| DIVINE | 20+ | 155 |
| Emerald | 20+ | 98 |
| Emerald | 20+ | 105 |
| Emerald | 20+ | 110 |
| Emerald | 20+ | 125 |
| IMPERIAL | 20+ | 155 |
| MADEIRA | 20+ | 140 |
| Magica | 20+ | 155 |
| Magica | 20+ | 170 |
| SEKOYA BEAUTY | 20+ | 155 |
| Sekoya pop | 20+ | 155 |
| VENTURA | 16+ | 85 |
| VENTURA | 16+ | 90 |
| VENTURA | 18+ | 90 |
| VENTURA | 18+ | 93 |
| VENTURA | 20+ | 105 |
| VENTURA | 20+ | 140 |

Precio (RMB) Desde

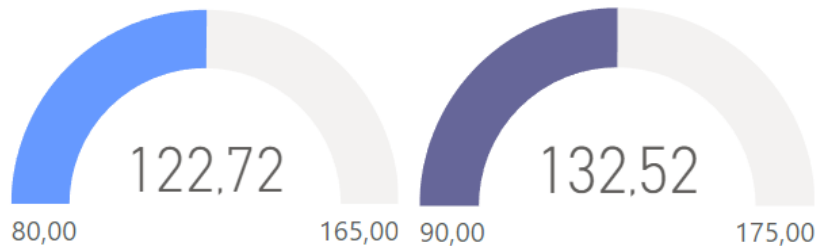
Precio (TMB) Hasta

Temporada

2023-2024

Semana

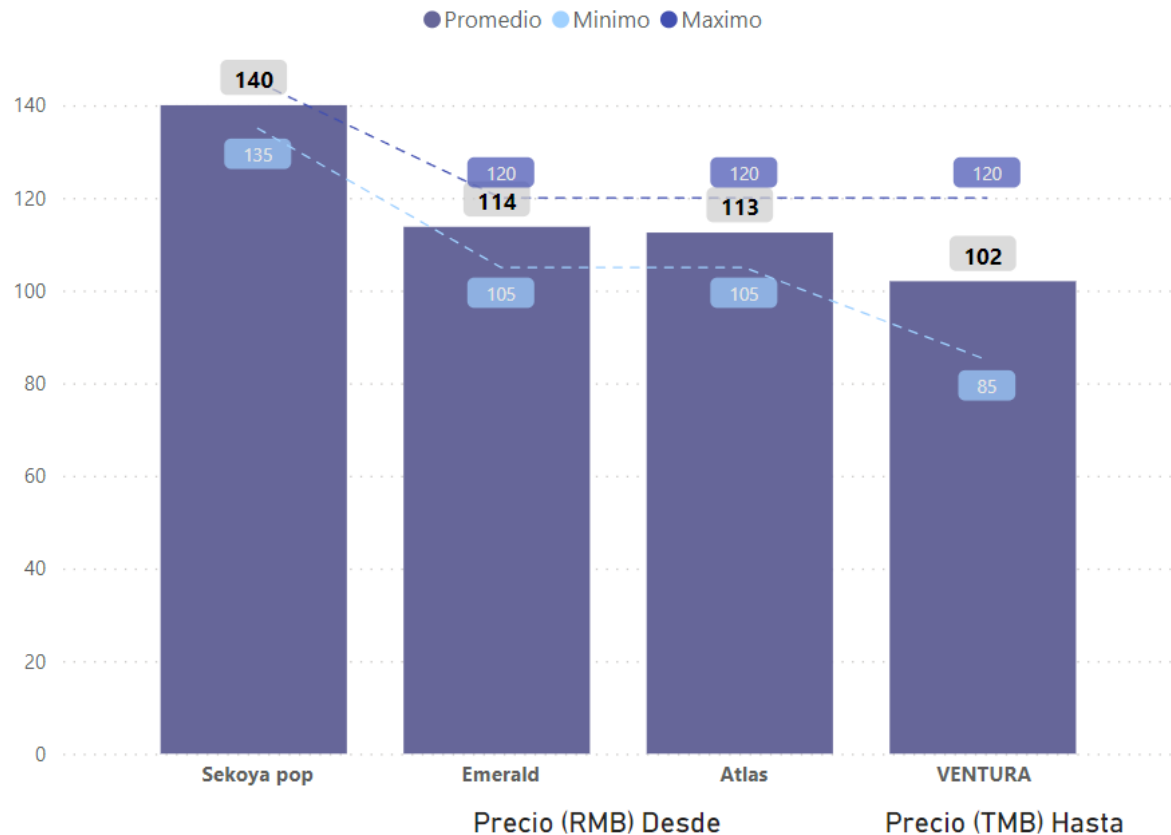
43



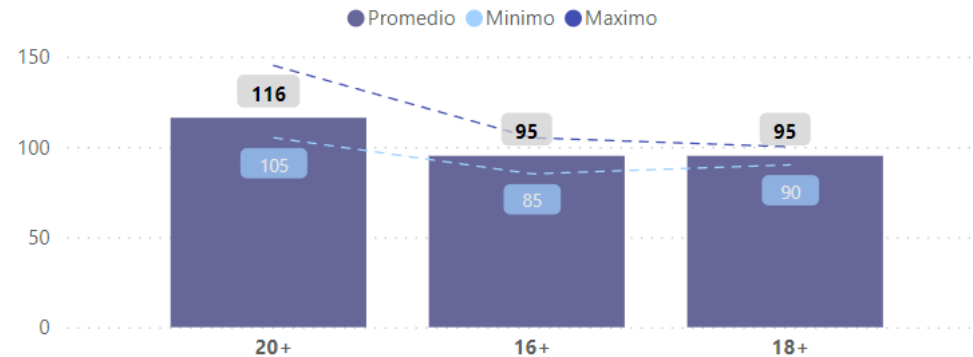
China; Blueberries



Rangos Precio (RMB) por Variedad



Rangos Precio (RMB) por Diametro



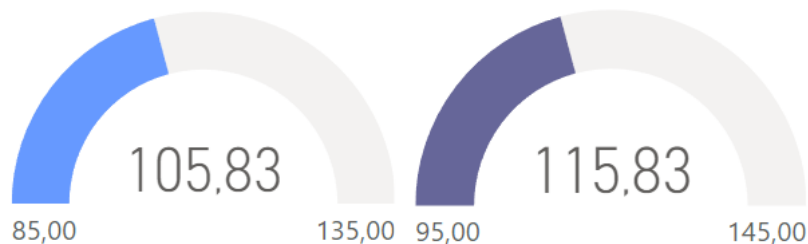
| Variedad | Diametro Fruto (mm) | Precio (RMB) |
|------------|---------------------|--------------|
| Atlas | 20+ | 110 |
| Atlas | 20+ | 115 |
| Emerald | 20+ | 110 |
| Emerald | 20+ | 115 |
| Sekoya pop | 20+ | 140 |
| VENTURA | 16+ | 90 |
| VENTURA | 16+ | 100 |
| VENTURA | 18+ | 95 |
| VENTURA | 20+ | 110 |
| VENTURA | 20+ | 115 |

Temporada

2023-2024

Semana

44



China; Blueberries